

**COMING
SOON**

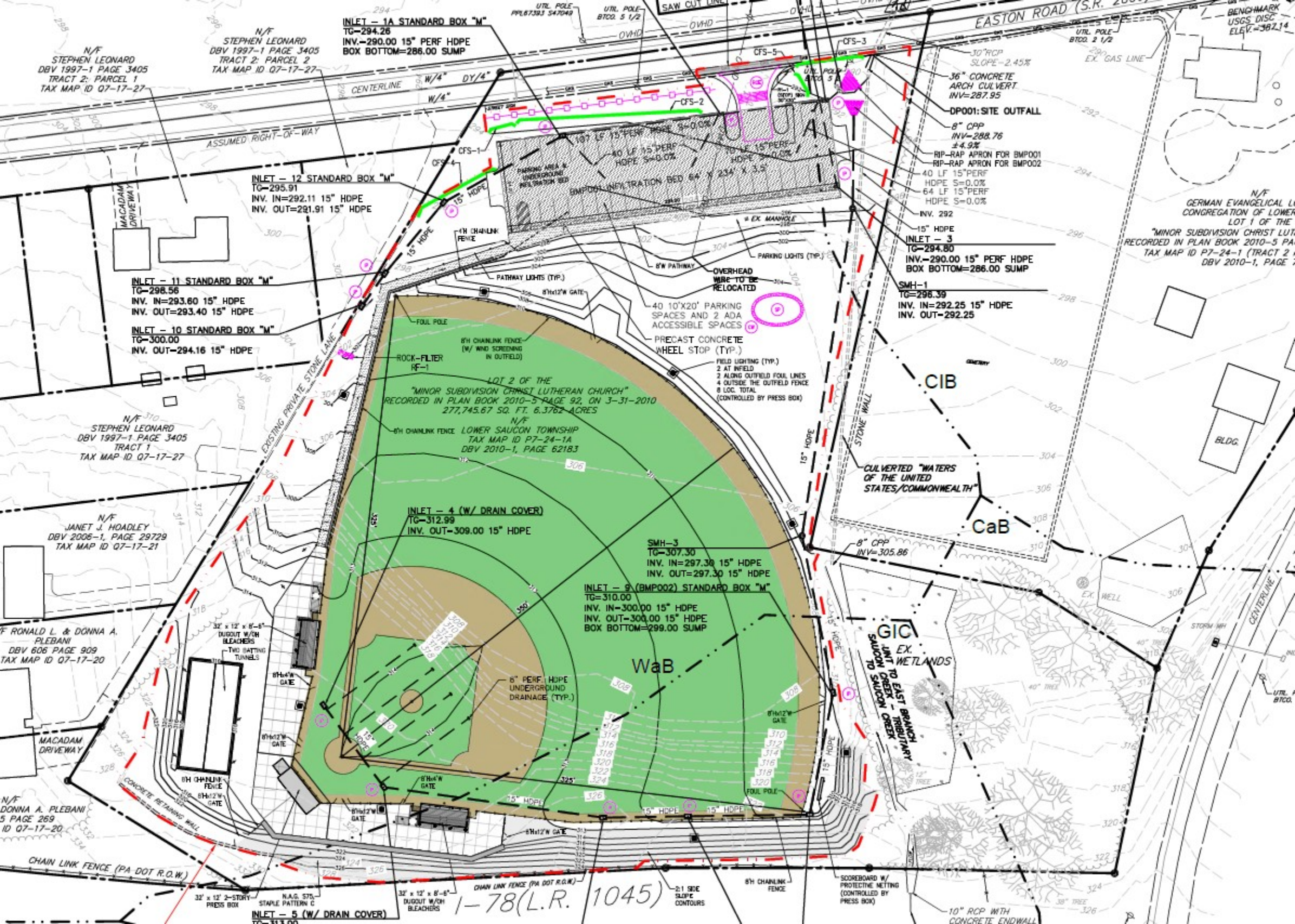


TO EASTON ROAD NEW 90' BASEBALL FIELD

LOWER SAUCON COUNCIL APPROVED THE CONSTRUCTION OF A NEW 90' BASEBALL FIELD TO BE BUILT AT EASTON ROAD PARK. THE NEW BASEBALL FIELD WILL REPLACE THE TWO SMALLER EXISTING FIELDS, PROVIDING THE TOWNSHIP WITH ITS FIRST 90' FIELD. THE NEW FIELD WILL HAVE A GRASS INFIELD, WHICH ALONG WITH THE OUTFIELD, WILL BE SODDED TO ASSIST WITH MAKING THE FIELD PLAYABLE IN THE SHORTEST TIME POSSIBLE. THIS PROJECT WAS PLACED OUT TO BID AND THE CONTRACTOR APPROVED TO COMPLETE THIS PROJECT WAS THE LOWEST BIDDER, CH-N CONSTRUCTION.

**CONSTRUCTION IS SET TO BEGIN
IN SEPTEMBER OF 2023**

(SEE SITE PLAN ON NEXT PAGE)



N/F
STEPHEN LEONARD
DBV 1997-1 PAGE 3405
TRACT 2: PARCEL 1
TAX MAP ID Q7-17-27

N/F
STEPHEN LEONARD
DBV 1997-1 PAGE 3405
TRACT 2: PARCEL 2
TAX MAP ID Q7-17-27

INLET - 1A STANDARD BOX "M"
TG-294.26
INV.-290.00 15" PERF HDPE
BOX BOTTOM=286.00 SUMP

INLET - 12 STANDARD BOX "M"
TG-295.91
INV. IN=292.11 15" HDPE
INV. OUT=291.91 15" HDPE

INLET - 11 STANDARD BOX "M"
TG-298.56
INV. IN=293.60 15" HDPE
INV. OUT=293.40 15" HDPE

INLET - 10 STANDARD BOX "M"
TG-300.00
INV. OUT=294.16 15" HDPE

N/F
STEPHEN LEONARD
DBV 1997-1 PAGE 3405
TRACT 1
TAX MAP ID Q7-17-27

N/F
JANET J. HOADLEY
DBV 2006-1, PAGE 29729
TAX MAP ID Q7-17-21

N/F
RONALD L. & DONNA A.
PLEBANI
DBV 606 PAGE 909
TAX MAP ID Q7-17-20

N/F
DONNA A. PLEBANI
5 PAGE 269
ID Q7-17-20

INLET - 5 (W/ DRAIN COVER)
TG-313.00

INLET - 4 (W/ DRAIN COVER)
TG-312.99
INV. OUT=309.00 15" HDPE

INLET - 9 (BMP002) STANDARD BOX "M"
TG-310.00
INV. IN=300.00 15" HDPE
INV. OUT=300.00 15" HDPE
BOX BOTTOM=299.00 SUMP

SMH-3
TG-307.30
INV. IN=297.30 15" HDPE
INV. OUT=297.30 15" HDPE

DP001: SITE OUTFALL

8" CPP
INV=288.76
±4.9%

RIP-RAP APRON FOR BMP001

40 LF 15" PERF
HDPE S=0.0%

64 LF 15" PERF
HDPE S=0.0%

INV. 292

INLET - 3
TG-294.80

INV.-290.00 15" PERF HDPE
BOX BOTTOM=286.00 SUMP

SMH-1
TG-298.39

INV. IN=292.25 15" HDPE
INV. OUT=292.25

8" CPP
INV=305.86

1-78(L.R. 1045)

10" RCP WITH
CONCRETE ENDWALL